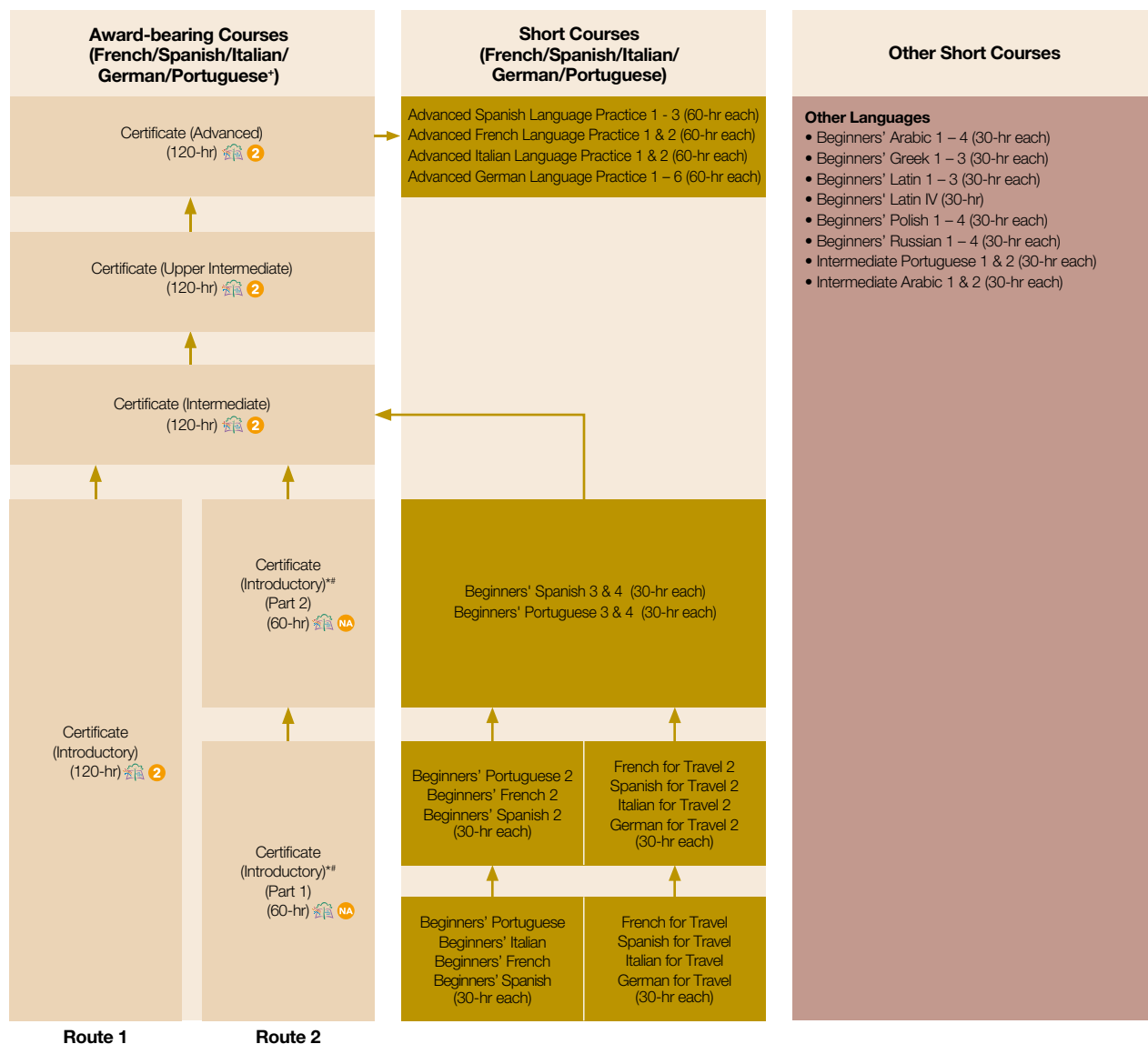


## European Language Courses



\* CEF is only available for students who have successfully completed both "Certificate in French/Spanish (Introductory) (Part 1)" & "Certificate in French/Spanish (Introductory) (Part 2)".  
 \* No CEF is available for 'Certificate in Italian/German (Introductory) (Part 1 & Part 2)'.  
 \* Portuguese language only Introductory and Intermediate levels (120-hr each) available.

There are prerequisites for some courses; please attach a copy of relevant Certificate or Statement of Attendance from previous courses to your application. In the absence of such evidence, applicants will be assessed by a phone interview in the target language. Please contact us for more information.

Award-bearing courses start twice per year (Sept & Mar). They last 120 hours (or Part 1 (60 hours) + Part 2 (60 hours) for Introductory level). Class meets once a week. Complete beginners start at Introductory level, then proceed to Intermediate, Upper Intermediate & Advanced. Upon the completion of Certificate (Advanced), students can proceed to Advanced Language Practice 1.

Short courses offer a casual exposure to the language with no examinations. Courses for Advanced Language Practice are offered in Sept & Mar while other short courses are offered in Oct, Jan & Apr.

Upon the completion of either Beginners' 2 or Travel 2, students can proceed to Certificate (Introductory) (Part 2) (60 hours). Upon completion of Beginners' 4, students can proceed to Certificate (Intermediate) (120 hours).

See legend on page 1 & 9 圖像說明於第1及9頁

Minimum Entry Requirements 基本入學要求 (P.288)

Fee 學費

Duration 修業期

Medium of Instruction 教學語言

Qualifications Framework 資歷架構

Exemption 豁免

Short Course 短期課程

For more and latest programme information, please visit our website  
 有關最新課程資訊及詳情，請瀏覽學院網站 [hkuspace.hku.hk](http://hkuspace.hku.hk)

## Certificate in French (Introductory)

Programme Code: EU020A

☎ 2975 5681

✉ don.lam@hkuspace.hku.hk



The programme is aimed at students with no previous or little knowledge of the language. It covers a range of everyday topics and situations and includes a balance of all four skills (speaking, listening, reading and writing), as well as practice on key grammar points, vocabulary and pronunciation relevant to the level. By the end of the programme, students should be able to understand and use basic everyday phrases to introduce themselves, ask and answer questions about personal details. They will also learn language to deal with everyday situations like shopping, eating out, talking about their jobs, families and interests.

- R** Applicants shall have:
- (a) no previous or little knowledge of the language, and
  - (b) sufficient English proficiency to follow simple explanations in English.

**\$** HK\$8,550

**D** 40 weeks

**E** French supplemented with a little English where necessary for explanation.

**Q** Level 2 (Reg. No.: 14/003520/L2)  
Validity Period: 20 Oct 2014 - on-going

## Certificate in French (Introductory) (Part 1 and Part 2)

Programme Code: EU004A

### Introductory French (Part 1)

Course Code: FREN2006



The programme is aimed at students with no previous or little knowledge of the language. It covers a range of everyday topics and situations and includes a balance of all four skills (speaking, listening, reading and writing), as well as practice on key grammar points, vocabulary and pronunciation relevant to the level. By the end of the programme, students should be able to understand and use basic everyday phrases to introduce themselves, ask and answer questions about personal details. They will also learn language to deal with everyday situations like shopping, eating out, talking about their jobs, families and interests.

Students will have to complete both (Introductory, Part 1) and (Introductory, Part 2) within 24 months.

- R** Applicants shall have:
- 1) no previous or little knowledge of the language; and
  - 2) sufficient English proficiency to follow simple explanations in English

**\$** HK\$4,450

### Introductory French (Part 2)

Course Code: FREN2007



This carries on from the Certificate in French (Introductory) (Part 1), and is suitable for anyone who has studied about 60 hours of French. It covers the same material as the second half of the 120-hour Certificate in French (Introductory), including everyday topics and a balance of all four skills (speaking, listening, reading and writing), as well as practice on key grammar, vocabulary and pronunciation.

- R** Applicants shall have:
- (a) i) obtained the Certificate in French (Introductory) (Part 1), awarded within the HKU system through HKU SPACE; or
  - ii) studied approximately 60 contact hours of French at a different institution and
  - (b) sufficient English proficiency to follow simple explanations in English.
- Other applicants may be interviewed if necessary to confirm their suitability for the programme, e.g. if they have studied a similar number of hours elsewhere or have alternative experience learning the language, such as a study visit to the country.
- In the absence of the evidence listed in (a), students should contact HKU SPACE by 1 February 2022 for further information.

**\$** HK\$4,450

☎ 2975 5681

✉ don.lam@hkuspace.hku.hk

**D** 20 weeks for each part

## Certificate in French (Intermediate)

Programme Code: EU019A

☎ 2975 5681

✉ don.lam@hkuspace.hku.hk



This programme can be taken upon successful completion of the Certificate in French (Introductory) or an equivalent programme of 110-130 hours. It enables students to consolidate language already learned and build on their grammar. As a result, students will feel increasingly confident in their communicative ability. By the end of the programme, students should be able to talk about topics such as families and friends, leisure activities, food and drink, past and future situations. They should also be able to understand the main ideas when listening and reading and write simple texts, e.g. postcards and emails.

- R** Applicants shall have:
- (a) i) obtained the Certificate in French (Introductory), awarded within the HKU system through HKU SPACE; or
  - ii) studied approximately 110-130 contact hours of French at a different institution and
  - (b) sufficient English proficiency to follow simple explanations in English.
- Other applicants may be interviewed if necessary to confirm their suitability for the programme, e.g. if they have studied a similar number of hours elsewhere or have alternative experience learning the language, such as a study visit to the country.
- In the absence of the evidence listed in (a), students should contact HKU SPACE by 1 February 2022 for further information.

**\$** HK\$8,950

**D** 40 weeks

**E** French supplemented with a little English where necessary for explanation.

**Q** Level 2 (Reg. No.: 14/003521/L2), Validity Period: 20 Oct 2014 - on-going

# European 歐洲語言

## Certificate in French (Upper Intermediate)

Programme Code: EU013A

☎ 2975 5681

✉ don.lam@hkuspace.hku.hk



This programme can be taken upon successful completion of the Certificate in French (Intermediate) or an equivalent programme of 230-250 hours. It continues to build upon the language already acquired, adding grammar and practising it in simple discussions, role-plays and group work, so that students can talk with confidence about the past, present and future. By the end of this programme, students should be able to express simple opinions and feelings in the language. They should also be able to read information from simple ads and to write texts on familiar topics using a range of verb tenses.

**R** Applicants shall have:

- (a) i) obtained the Certificate in French (Intermediate), awarded within the HKU system through HKU SPACE; or
- ii) studied approximately 230-250 contact hours of French at a different institution. and
- (b) sufficient English proficiency to follow simple explanations in English.

Other applicants may be interviewed if necessary to confirm their suitability for the programme, e.g. if they have studied a similar number of hours elsewhere or have alternative experience learning the language, such as a study visit to the country.

In the absence of the evidence listed in (a), students should contact HKU SPACE by 1 February 2022 for further information.

**\$** HK\$9,500

**D** 40 weeks

**E** French supplemented with a little English where absolutely necessary for explanation.

**Q** Level 2 (Reg. No.: 14/003522/L2) Validity Period: 20 Oct 2014 - on-going

## Certificate in French (Advanced)

Programme Code: EU011A

☎ 2975 5681

✉ don.lam@hkuspace.hku.hk



This programme can be taken upon successful completion of the Certificate in French (Upper Intermediate) or an equivalent programme of 350-370 hours. Students will practise speaking skills, expressing opinions on culture, sport, food & drink, current affairs, local events, holidays & the world today. They will read texts, comment in speaking & writing and listen to songs & recordings of native speakers. By the end of the programme, students should be able to talk with fluency about everyday topics, write simple texts on topics of familiar interest, follow the main ideas when listening to clear speech or reading simple texts.

**R** Applicants shall have:

- (a) i) obtained the Certificate in French (Upper Intermediate), awarded within the HKU System through HKU SPACE; or
- ii) studied approximately 350-370 contact hours of French at a different institution and
- (b) sufficient English proficiency to follow simple explanations in English.

Other applicants may be interviewed if necessary to confirm their suitability for the programme, e.g. if they have studied a similar number of hours elsewhere or have alternative experience learning the language, such as a study visit to the country.

In the absence of the evidence listed in (a), students should contact HKU SPACE by 1 February 2022 for further information.

**\$** HK\$9,500

**D** 40 weeks

**E** French supplemented with a little English where absolutely necessary for explanation.

**Q** Level 2 (Reg. No.: 14/003663/L2) Validity Period: 19 Nov 2014 - on-going

## Advanced French Language Practice 2

Programme Code: FREN9008

☎ 2975 5764

✉ joyce.ng@hkuspace.hku.hk



This course is designed to cater for advanced-level students of French who have already completed the HKU SPACE Advanced Certificate in French or the equivalent elsewhere and who wish to approach the language at an advanced and practical way. These students wish to keep practicing the language in an interactive class environment, whilst at the same time learning more about the culture of the French-speaking world.

- R** - Applicants should have completed Certificate in French (Advanced) at HKU SPACE OR studied around 450 hours of French in any institution and provide a Certificate/ Statement of Attendance to demonstrate this.
- In the absence of such evidence, external applicants should contact us for further information. Some students may be interviewed to determine their proficiency level.
- They would also be expected to be studying at around B1 level on the Common European Language Framework of Reference for languages.
- It is not mandatory for students to have completed the Advanced French Language Practice.

**\$** HK\$5,150

**D** 20 weeks

**E** French supplemented with a little English where necessary for explanation.

## Beginners' French

Programme Code: FREN9004

☎ 2975 5764

✉ joyce.ng@hkuspace.hku.hk



This course is for complete beginners. It aims to be a simple introduction giving participants a taste for the French language. There will be plenty of opportunities to listen and speak the language whilst learning the basics of French pronunciation grammar and vocabulary. The classroom atmosphere will be relaxed and supportive with practice in small groups using the latest interactive methodology. Topics include greetings, numbers, countries, nationalities, languages, talking about ones job and simple question and answer forms.

**R** No knowledge of French is required, though applicants should be competent in English.

**\$** HK\$3,250

**D** 10 weeks

**E** French supplemented with a little English where necessary for explanation.

## Beginners' French Part 2

Programme Code: FREN9006

☎ 2975 5764

✉ joyce.ng@hkuspace.hku.hk



This course continues on from Beginners French. It uses the latest communicative methodology, giving participants plenty of opportunity to listen and speak the language whilst improving grammar, vocabulary and pronunciation at the same time. Topics include directions around town, transport, talking about food, time, daily routines and family. The language of instruction will be French with some English where appropriate for explanation.

- R** - Applicants should have completed Beginners French OR French for Travel at HKU SPACE OR studied around 30 hours of French in any institution and provide a certificate/ Statement of Attendance to demonstrate this.
- In the absence of such evidence, external applicants should contact us for further information. Some students may be interviewed to determine their proficiency level. Applicants should also be competent in English.

**\$** HK\$3,250

**D** 10 weeks

**E** French supplemented with a little English where necessary for explanation.

See legend on page 1 & 9 圖像說明於第1及9頁

**R** Minimum Entry Requirements 基本入學要求 (P.288)

**\$** Fee 學費

**D** Duration 修業期

**E** Medium of Instruction 教學語言

**Q** Qualifications Framework 資歷架構

**E** Exemption 豁免

**S** Short Course 短期課程

For more and latest programme information, please visit our website  
有關最新課程資訊及詳情，請瀏覽學院網站 [hkuspace.hku.hk](http://hkuspace.hku.hk)

## Certificate in Spanish (Introductory)

Programme Code: EU006A

☎ 2975 5681

✉ don.lam@hkuspace.hku.hk



The programme is aimed at students with no previous or little knowledge of the language. It covers a range of everyday topics and situations and includes a balance of all four skills (speaking, listening, reading and writing), as well as practice on key grammar points, vocabulary and pronunciation relevant to the level. By the end of the programme, students should be able to understand and use basic everyday phrases to introduce themselves, ask and answer questions about personal details. They will also learn language to deal with everyday situations like shopping, eating out, talking about their jobs, families and interests.

- R** Applicants shall have:
- (a) no previous or little knowledge of the language, and
  - (b) sufficient English proficiency to follow simple explanations in English.

**\$** HK\$8,850

**D** 40 weeks

**E** Spanish supplemented with a little English where necessary for explanation.

**Q** Level 2 (Reg. No.: 14/003523/L2) Validity Period: 20 Oct 2014 - on-going

## Certificate in Spanish (Introductory) (Part 1 and Part 2)

Programme Code: EU008A

## Introductory Spanish (Part 1)

Programme Code: SPAN2007



The programme is aimed at students with no previous or little knowledge of the language. It covers a range of everyday topics and situations and includes a balance of all four skills (speaking, listening, reading and writing), as well as practice on key grammar points, vocabulary and pronunciation relevant to the level. By the end of the programme, students should be able to understand and use basic everyday phrases to introduce themselves, ask and answer questions about personal details. They will also learn language to deal with everyday situations like shopping, eating out, talking about their jobs, families and interests.

Students will have to complete both (Introductory, Part 1) and (Introductory, Part 2) within 24 months.

- R** Applicants shall have:
- 1) no previous or little knowledge of the language; and
  - 2) sufficient English proficiency to follow simple explanations in English

**\$** HK\$4,750

## Introductory Spanish (Part 2)

Programme Code: SPAN2008



This carries on from the Certificate in Spanish (Introductory) (Part 1), and is suitable for anyone who has studied about 60 hours of Spanish. It covers the same material as the second half of the 120-hour Certificate in Spanish (Introductory), including everyday topics and a balance of all four skills (speaking, listening, reading and writing), as well as practice on key grammar, vocabulary and pronunciation.

- R** Applicants shall have:
- (a) i) obtained the Certificate in French (Introductory) (Part 1), awarded within the HKU system through HKU SPACE; or
  - ii) studied approximately 60 contact hours of French at a different institution and
  - (b) sufficient English proficiency to follow simple explanations in English.
- Other applicants may be interviewed if necessary to confirm their suitability for the programme, e.g. if they have studied a similar number of hours elsewhere or have alternative experience learning the language, such as a study visit to the country.
- In the absence of the evidence listed in (a), students should contact HKU SPACE by 1 February 2022 for further information.

**\$** HK\$4,450

☎ 2975 5681

✉ don.lam@hkuspace.hku.hk

**D** 20 weeks for each part

## Certificate in Spanish (Intermediate)

Programme Code: EU005A

☎ 2975 5681

✉ don.lam@hkuspace.hku.hk



This programme can be taken upon successful completion of the Certificate in Spanish (Introductory) or an equivalent programme of 110-130 hours. It enables students to consolidate language already learned and build on their grammar. As a result, students will feel increasingly confident in their communicative ability. By the end of the programme, students should be able to talk about topics such as families and friends, leisure activities, food and drink, past and future situations. They should also be able to understand the main ideas when listening and reading and write simple texts, e.g. postcards and emails.

- R** Applicants shall have:
- (a) i) obtained the Certificate in Spanish (Introductory), awarded within the HKU system through HKU SPACE; or
  - ii) studied approximately 110-130 contact hours of Spanish at a different institution and
  - (b) sufficient English proficiency to follow simple explanations in English.

Other applicants may be interviewed if necessary to confirm their suitability for the programme, e.g. if they have studied a similar number of hours elsewhere or have alternative experience learning the language, such as a study visit to the country.

In the absence of the evidence listed in (a), students should contact HKU SPACE by 1 February 2022 for further information.

**\$** HK\$9,250

**D** 40 weeks

**E** Spanish supplemented with a little English where necessary for explanation.

**Q** Level 2 (Reg. No.: 14/003524/L2) Validity Period: 20 Oct 2014 - on-going

## Certificate in Spanish (Upper Intermediate)

Programme Code: EU014A

☎ 2975 5681

✉ don.lam@hkuspace.hku.hk



This programme can be taken upon successful completion of the Certificate in Spanish (Intermediate) or an equivalent programme of 230-250 hours. It continues to build upon the language already acquired, adding grammar and practising it in simple discussions, role-plays and group work, so that students can talk with confidence about the past, present and future. By the end of this programme, students should be able to express simple opinions and feelings in the language. They should also be able to read information from simple ads and to write texts on familiar topics using a range of verb tenses.

# European 歐洲語言

- R** Applicants shall have:
- (a) i) obtained the Certificate in Spanish (Intermediate), awarded within the HKU system through HKU SPACE; or
  - ii) studied approximately 230-250 contact hours of Spanish at a different institution and
  - (b) sufficient English proficiency to follow simple explanations in English.
- Other applicants may be interviewed if necessary to confirm their suitability for the programme, e.g. if they have studied a similar number of hours elsewhere or have alternative experience learning the language, such as a study visit to the country.
- In the absence of the evidence listed in (a), students should contact HKU SPACE by 1 February 2022 for further information.

- S** HK\$9,800 **D** 40 weeks
- M** Spanish supplemented with a little English where absolutely necessary for explanation.
- Q** Level 2 (Reg. No.: 14/003525/L2), Validity Period: 20 Oct 2014 – on-going

## Certificate in Spanish (Advanced)

Programme Code: EU017A

2975 5681  
don.lam@hkuspace.hku.hk

This programme can be taken upon successful completion of the Certificate in Spanish (Upper Intermediate) or an equivalent programme of 350-370 hours. Students will practise speaking skills, expressing opinions on culture, sport, food & drink, current affairs, local events, holidays & the world today. They will read texts, comment in speaking & writing and listen to songs & recordings of native speakers. By the end of the programme, students should be able to talk with fluency about everyday topics, write simple texts on topics of familiar interest, follow the main ideas when listening to clear speech or reading simple texts. This programme can be taken upon successful completion of the Certificate in Spanish (Upper Intermediate) or an equivalent programme of 350-370 hours. Students will practise speaking skills, expressing opinions on culture, sport, food & drink, current affairs, local events, holidays & the world today. They will read texts, comment in speaking & writing and listen to songs & recordings of native speakers. By the end of the programme, students should be able to talk with fluency about everyday topics, write simple texts on topics of familiar interest, follow the main ideas when listening to clear speech or reading simple texts.

- R** Applicants shall have:
- (a) i) obtained the Certificate in Spanish (Upper Intermediate), awarded within the HKU system through HKU SPACE; or
  - ii) studied approximately 350-370 contact hours of Spanish at a different institution and
  - (b) sufficient English proficiency to follow simple explanations in English.
- Other applicants may be interviewed if necessary to confirm their suitability for the programme, e.g. if they have studied a similar number of hours elsewhere or have alternative experience learning the language, such as a study visit to the country.
- In the absence of the evidence listed in (a), students should contact HKU SPACE by 1 February 2022 for further information.

- S** HK\$9,800 **D** 40 weeks
- M** Spanish supplemented with a little English where absolutely necessary for explanation.
- Q** Level 2 (Reg. No.: 14/003665/L2), Validity Period: 19 Nov 2014 – on-going

## Advanced Spanish Language Practice 2

Programme Code: SPAN9009

2975 5764  
joyce.ng@hkuspace.hku.hk

This course is to cater for advanced-level students who have already completed the HKU SPACE Certificate in Spanish (Advanced) or the equivalent elsewhere & who wish to approach the language at an advanced & practical way. Students will keep practicing the language, whilst at the same time learning more about the culture of the Spanish-speaking world. They will also be given the opportunity to engage with authentic texts from magazines, newspapers, songs, TV, films etc through discussion & group work. They will improve their oral communication skills & their range of vocabulary. There will be a relaxed & supportive learning environment. The course is not exam-based.

- R** - Applicants should have completed the Certificate in Spanish (Advanced) at HKU SPACE OR studied around 480 hours of Spanish and provide a copy of Certificate/ Statement of Attendance to demonstrate this. It is not mandatory for students to have completed the Advanced Spanish language Practice.
- In the absence of such evidence, external applicants should contact us for further information. Some students may be interviewed to determine their proficiency level.
  - Applicants would be expected to have acquired a minimum level of B.1.1 on the European Language Framework.

- S** HK\$5,150 **D** 20 weeks
- M** Spanish supplemented with a little English where necessary for explanation.

## Beginners' Spanish

Programme Code: SPAN9002

2975 5764  
joyce.ng@hkuspace.hku.hk

This course is for complete beginners. It aims to be a simple introduction giving participants a taste for the Spanish language. There will be plenty of opportunities to listen and speak the language whilst learning the basics of Spanish pronunciation, grammar and vocabulary. The classroom atmosphere will be relaxed and supportive with practise in small groups using the latest interactive methodology. Topics include greetings, numbers, countries, nationalities, languages, talking about ones job, describing another person, asking and answering questions.

- R** No knowledge of Spanish is required though applicants should be competent in English.
- S** HK\$3,250 **D** 10 weeks
- M** Spanish supplemented with a little English where necessary for explanation.

## Beginners' Spanish 2

Programme Code: SPAN9003

2975 5764  
joyce.ng@hkuspace.hku.hk

This course is designed for students who have completed Beginners' Spanish. There will be plenty of opportunities to listen and practice speaking the language whilst learning basic Spanish grammar, vocabulary and pronunciation. Topics include describing friends and family, everyday language around town, colours and personal characteristics. Participants will also learn a little about the culture of the Spanish-speaking world. The classroom atmosphere will be relaxed and supportive with practise in small groups using the latest interactive methodology.

- R** - Applicants should have completed Beginners Spanish OR Spanish for Travel at HKU SPACE OR studied around 30 hours of Spanish in any institution and provide a Certificate/ Statement of Attendance to demonstrate this.
- In the absence of such evidence, external applicants should contact us for further information. Some students may be interviewed to determine their proficiency level.
- S** HK\$3,250 **D** 10 weeks
- M** Spanish supplemented with a little English where necessary for explanation.

See legend on page 1 & 9 圖說說明於第1及9頁

- R** Minimum Entry Requirements 基本入學要求 (P.288) **S** Fee 學費 **D** Duration 修業期  
**M** Medium of Instruction 教學語言 **Q** Qualifications Framework 資歷架構 **E** Exemption 豁免 **S** Short Course 短期課程

For more and latest programme information, please visit our website  
有關最新課程資訊及詳情，請瀏覽學院網站 [hkuspace.hku.hk](http://hkuspace.hku.hk)

## Certificate in German (Introductory)

Programme Code: EU002A

☎ 2975 5695

✉ christy.mfc.chung@hkuspace.hku.hk



The programme is aimed at students with no previous or little knowledge of the language. It covers a range of everyday topics and situations and includes a balance of all four skills (speaking, listening, reading and writing), as well as practice on key grammar points, vocabulary and pronunciation relevant to the level. By the end of the programme, students should be able to understand and use basic everyday phrases to introduce themselves, ask and answer questions about personal details. They will also learn language to deal with everyday situations like shopping, eating out, talking about their jobs, families and interests.

- R** Applicants shall have:
- 1) no previous or little knowledge of the language; and
  - 2) sufficient English proficiency to follow simple explanations in English

**\$** HK\$8,850

**D** 40 weeks

**E** German supplemented with a little English where necessary for explanation

**Q** Level 2 (Reg No.: 14/003518/L02)  
Validity Period: 20 Oct 2014 - on-going

More details



## Certificate in German (Introductory) (Part 1 and Part 2)

Programme Code: EU016A

## Introductory German (Part 1)

Programme Code: GERM2003



The programme is aimed at students with no previous or little knowledge of the language. It covers a range of everyday topics and situations and includes a balance of all four skills (speaking, listening, reading and writing), as well as practice on key grammar points, vocabulary and pronunciation relevant to the level. By the end of the programme, students should be able to understand and use basic everyday phrases to introduce themselves, ask and answer questions about personal details. They will also learn language to deal with everyday situations like shopping, eating out, talking about their jobs, families and interests.

Students will have to complete both (Introductory, Part 1) and (Introductory, Part 2) within 24 months.

- R** Applicants shall have
- no previous or little knowledge of the language; and
  - sufficient English proficiency to follow simple explanations in English.

**\$** HK\$4,750

## Introductory German (Part 2)

Course Code: GERM2006

The programme is aimed at students with no previous or little knowledge of the language. It covers a range of everyday topics and situations and includes a balance of all four skills (speaking, listening, reading and writing), as well as practice on key grammar points, vocabulary and pronunciation relevant to the level. By the end of the programme, students should be able to understand and use basic everyday phrases to introduce themselves, ask and answer questions about personal details. They will also learn language to deal with everyday situations like shopping, eating out, talking about their jobs, families and interests.

- R** Applicants shall have:
- (a) i) obtained the Certificate in German (Introductory) (Part 1), awarded within the HKU system through HKU SPACE; or
  - ii) studied approximately 60 contact hours of German at a different institution and
  - (b) sufficient English proficiency to follow simple explanations in English.
- Other applicants may be interviewed if necessary to confirm their suitability for the programme, e.g. if they have studied a similar number of hours elsewhere or have alternative experience learning the language, such as a study visit to the country.
- In the absence of the evidence listed in (a), students should contact HKU SPACE by 1 February 2022 for further information.

☎ 2975 5695

✉ christy.mfc.chung@hkuspace.hku.hk

**D** 20 weeks for each part

**E** German supplemented with a little English where necessary for explanation.

## Certificate in German (Intermediate)

Programme Code: EU003A

☎ 2975 5695

✉ christy.mfc.chung@hkuspace.hku.hk



This programme can be taken upon successful completion of the Certificate in German (Introductory) or an equivalent programme of 110-130 hours. It enables students to consolidate language already learned and build on their grammar. As a result, students will feel increasingly confident in their communicative ability. By the end of the programme, students should be able to talk about topics such as families and friends, leisure activities, food and drink, past and future situations. They should also be able to understand the main ideas when listening and reading and write simple texts, e.g. postcards and emails.

- R** Applicants shall have:
- (a) obtained the Certificate in German (Introductory), awarded within the HKU system through HKU SPACE; or
  - (b) studied approximately 110-130 hours of German at a different institution; and
  - sufficient English proficiency to follow simple explanations in English.

Other applicants may be interviewed if necessary to confirm their suitability for the programme, e.g. if they have studied a similar number of hours elsewhere or have alternative experience learning the language, such as a study visit to the country.

In the absence of the evidence listed in (1), students should contact HKU SPACE by 1 February 2022 for further information.

**\$** HK\$9,250

**D** 40 weeks

**E** German supplemented with a little English where necessary for explanation.

**Q** Level 2 (Reg. No.: 14/003519/L2) Validity Period: 20 Oct 2014 - on-going



# European 歐洲語言

## Certificate in Italian (Introductory)

Programme Code: EU018A

☎ 2975 5695

✉ christy.mfc.chung@hkuspace.hku.hk



The programme is aimed at students with no previous or little knowledge of the language. It covers a range of everyday topics and situations and includes a balance of all four skills (speaking, listening, reading and writing), as well as practice on key grammar points, vocabulary and pronunciation relevant to the level. By the end of the programme, students should be able to understand and use basic everyday phrases to introduce themselves, ask and answer questions about personal details. They will also learn language to deal with everyday situations like shopping, eating out, talking about their jobs, families and interests.

**R** Applicants shall have:

- 1) no previous or little knowledge of the language; and
- 2) sufficient English proficiency to follow simple explanations in English

**\$** HK\$8,850

**D** 40 weeks

**E** Italian supplemented with a little English where necessary for explanation.

**Q** Level 2 (Reg No.: 14/003661/L02)  
Validity Period: 19 Nov 2014 - on-going

More details



## Certificate in Italian (Intermediate)

Programme Code: EU009A

☎ 2975 5695

✉ christy.mfc.chung@hkuspace.hku.hk



This programme can be taken upon successful completion of the Certificate in Italian (Introductory) or an equivalent programme of 110-130 hours. It enables students to consolidate language already learned and build on their grammar. As a result, students will feel increasingly confident in their communicative ability. By the end of the programme, students should be able to talk about topics such as families and friends, leisure activities, food and drink, past and future situations. They should also be able to understand the main ideas when listening and reading and write simple texts, e.g. postcards and emails.

**R** Applicants shall have:

- (a) obtained the Certificate in Italian (introductory), awarded within the HKU System through HKU SPACE; or
- (b) studied approximately 110-130 hours of Italian at a different institution;
- sufficient English proficiency to follow simple explanations in English.

Other applicants may be interviewed if necessary to confirm their suitability for the programme, e.g. if they have studied a similar number of hours elsewhere or have alternative experience learning the language, such as a study visit to the country.

In the absence of the evidence listed in (1), students should contact HKU SPACE by 1 February 2022 for further information.

**\$** HK\$9,250

**D** 40 weeks

**E** Italian supplemented with a little English where necessary for explanation.

**Q** Level 2 (Reg. No.: 14/003662/L2) Validity Period: 19 Nov 2014 - on-going

## Certificate in Italian (Upper Intermediate)

Programme Code: EU012A

☎ 2975 5695

✉ christy.mfc.chung@hkuspace.hku.hk



This programme can be taken upon successful completion of the Certificate in Italian (Intermediate) or an equivalent programme of 230-250 hours. It continues to build upon the language already acquired, adding grammar and practising it in simple discussions, role-plays and group work, so that students can talk with confidence about the past, present and future. By the end of this programme, students should be able to express simple opinions and feelings in the language. They should also be able to read information from simple ads and to write texts on familiar topics using a range of verb tenses.

**R** Applicants shall have:

- (a) obtained the Certificate in Italian (Intermediate), awarded within the HKU System through HKU SPACE; or
- (b) studied approximately 230-250 hours of Italian at a different institution; and
- sufficient English proficiency to follow simple explanations in English.

Other applicants may be interviewed if necessary to confirm their suitability for the programme, e.g. if they have studied a similar number of hours elsewhere or have alternative experience learning the language, such as a study visit to the country.

In the absence of the evidence listed in (1), students should contact HKU SPACE by 1 February 2022 for further information.

**\$** HK\$9,800

**D** 40 weeks

**E** Italian supplemented with a little English where necessary for explanation.

**Q** Level 2 (Reg. No.: 14/003666/L2) Validity Period: 19 Nov 2014 - on-going

## Beginners' Italian

Programme Code: ITAL9025



☎ 2975 5764

✉ joyce.ng@hkuspace.hku.hk



This course is designed to cater for complete beginners of the Italian language. The course will offer students a first taste of Italian, focusing on oral communication, basic grammar and lexicon. The students will practice the language in an interactive class environment, whilst at the same time learning a little about the culture of Italy and its habitants. The course is not exam-based.

**R** No knowledge of Italian is required though applicants should be competent in English.

**\$** HK\$3,500

**D** 10 weeks

**E** Italian supplemented with a little English where necessary for explanation.

## Certificate in Portuguese (Introductory)

Programme Code: EU023A

☎ 2975 5695

✉ joyce.ng@hkuspace.hku.hk



The programme aims to

- Introduce students to simple phrases and sentences used in basic conversation, e.g.: introducing oneself, saying hello, reserving a hotel room, ordering food and drink, talking about your job, finding your way around town, talking about likes and dislikes and holidays.
- Give students the basic grammar and vocabulary needed for simple communication, e.g. present tense forms, adjectives, articles, basic modal verbs (e.g. poder and dever), and prepositions of place.
- Provide students with the techniques needed to listen with confidence to simplified, everyday dialogues when spoken clearly and slowly.
- Introduce students to some areas of Portuguese culture such as food and drink, greetings, festivals and places.
- Enable students to extract information from very simple written texts such as forms, menus and short, simplified articles. Also to write short simple postcards and fill in information on a form, e.g. hotel registration form.

On completion of the programme, students should be able to

- in speaking, to use simple words and phrases to handle basic situations when travelling.
- in writing, to produce very short simple texts, e.g. a postcard or form filling.
- in listening, to demonstrate an understanding of the key ideas from very simple conversations when the language is slow and clear.
- in reading, to extract key ideas from menus, forms and short, simplified texts on everyday topics.

- R** Applicants shall have:
- (a) no previous or little knowledge of Portuguese, and
  - (b) sufficient English proficiency to follow simple explanations in English.

**\$** HK\$9,200

**D** 40 weeks

**E** Portuguese supplemented with a little English where absolutely necessary for explanation.

**Q** Level 2 (Reg. No.: 20/000263/L2) Validity Period: 01 Jun 2020 - on-going

More details



## Beginners' Portuguese

Programme Code: OEUR9004

☎ 2975 5764

✉ joyce.ng@hkuspace.hku.hk



This course is designed for complete beginners. The course will give students a first taste of the language, focusing on several skills (oral communication, listening and basic grammar). Students will practise the language in an interactive class and will learn a little about the culture of Portuguese-speaking countries.

**R** No knowledge of Portuguese is required, though applicants should be competent in English.

**\$** HK\$3,550

**D** 10 weeks

**E** Portuguese supplemented with a little English where necessary for explanation.

## Beginners' Portuguese 2

Programme Code: OEUR9005

S

☎ 2975 5764

✉ joyce.ng@hkuspace.hku.hk



This course continues on from Beginners' Portuguese. It uses the latest communicative methodology, giving participants plenty of opportunities to listen and speak the language whilst improving grammar, vocabulary and pronunciation at the same time. Topics include directions around town, transport, talking about food, time, daily routines and family. The students will keep practising the language in an interactive class environment, and at the same time will learn about the culture of the Portuguese-speaking world (with continuous references to Brazil, Macao and other ex-Portuguese colonies). There will be a relaxed and supportive learning environment and the course is not exam-based.

- R** - Applicants should have completed Beginners' Portuguese at HKU SPACE OR studied around 30 hours of Portuguese in any institution and provide a Certificate / Statement of Attendance to demonstrate this.
- In the absence of such evidence, external applicants should contact us for further information. Some students may be interviewed to determine their proficiency level.

**\$** HK\$3,550

**D** 10 weeks

**E** Portuguese supplemented with a little English where necessary for explanation.

## Beginners' Latin

Programme Code: OEUR9001

S

☎ 2975 5764

✉ joyce.ng@hkuspace.hku.hk



This course is designed to cater for complete beginners who have an interest in the Latin language. The emphasis will be on developing a basic reading ability but with some oral work in addition. The course will also deal with cultural aspects of the ancient Latin-speaking world, their traditions and way of living. PowerPoint presentations to be used in the course are available at <https://linguae.weebly.com/latin-space-i.html> by scrolling down to the heading 'Teaching Aids for Latin via Ovid'. The course is not exam-based.

**R** No knowledge of Latin is required though applicants should be competent in English.

**\$** HK\$3,550

**D** 10 weeks

**E** Latin supplemented with a little English where necessary for explanation.

## Beginners' Greek

Programme Code: OEUR9011

S

☎ 2975 5764

✉ joyce.ng@hkuspace.hku.hk



This course is suitable for anyone who would like to have a short introduction to the language and culture of Greece; whether they intend to use the language on a trip to Greece or are simply interested in learning more about this fascinating country and its heritage. It includes a balance of language of practice and information about the Greek culture. The course will be taught in an interactive fashion for efficient language practice, supplemented with images and authentic texts from Greece today.

**R** No knowledge of Greek is required. Applicants should be competent in English.

**\$** HK\$3,550

**D** 10 weeks

**E** Greek supplemented with a little English where necessary for explanation.



## European

## 歐洲語言

### Beginners' Polish

Programme Code: OEUR9007



☎ 2975 5764



✉ joyce.ng@hkuspace.hku.hk

This course is designed to cater for complete beginners of Polish. The course will offer students a first taste of the language, with a focus on oral communication and basic grammar. The students will practice the language in an interactive class environment, whilst at the same time learning a little about the culture of Poland and its habitants. The course is not exam-based.

**R** No knowledge of Polish is required, though applicants should be competent in English.

**\$** HK\$3,550

**D** 10 weeks

**E** Polish supplemented with a little English where necessary for explanation.

### Beginners' Russian

Programme Code: OEUR9014



☎ 2975 5764



✉ joyce.ng@hkuspace.hku.hk

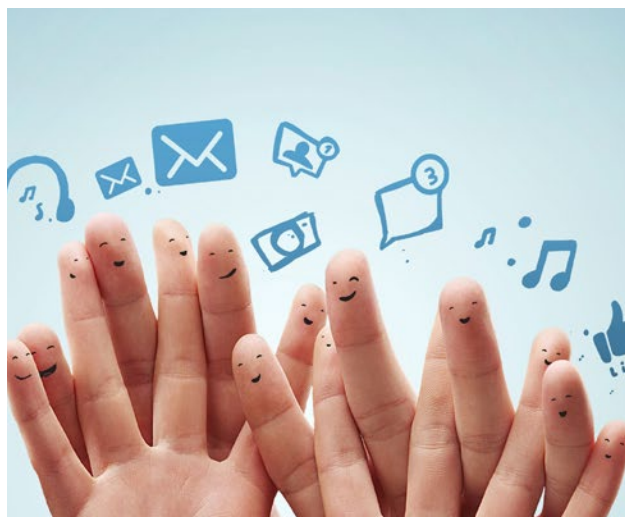
This is a course for people who have never studied Russian. The focus is on speaking and the atmosphere is relaxed. Participants will be given a first taste of the language and they learn some essential words and phrases to greet people, ask about nationality, count and order food and drink. They will also begin to learn the Russian alphabet. The course is not exam-based.

**R** No knowledge of Russian is required, though applicants should be competent in English.

**\$** HK\$3,550

**D** 10 weeks

**E** Russian supplemented with a little English where necessary for explanation.



Subscribe to receive  
our latest update!

訂閱以緊貼學院  
最新資訊



See legend on page 1 & 9 圖像說明於第1及9頁

**R** Minimum Entry Requirements 基本入學要求 (P.288)

**\$** Fee 學費

**D** Duration 修業期

**E** Medium of Instruction 教學語言

**Q** Qualifications Framework 資歷架構

**E** Exemption 豁免

**S** Short Course 短期課程

For more and latest programme information, please visit our website  
有關最新課程資訊及詳情，請瀏覽學院網站 [hkuspace.hku.hk](http://hkuspace.hku.hk)