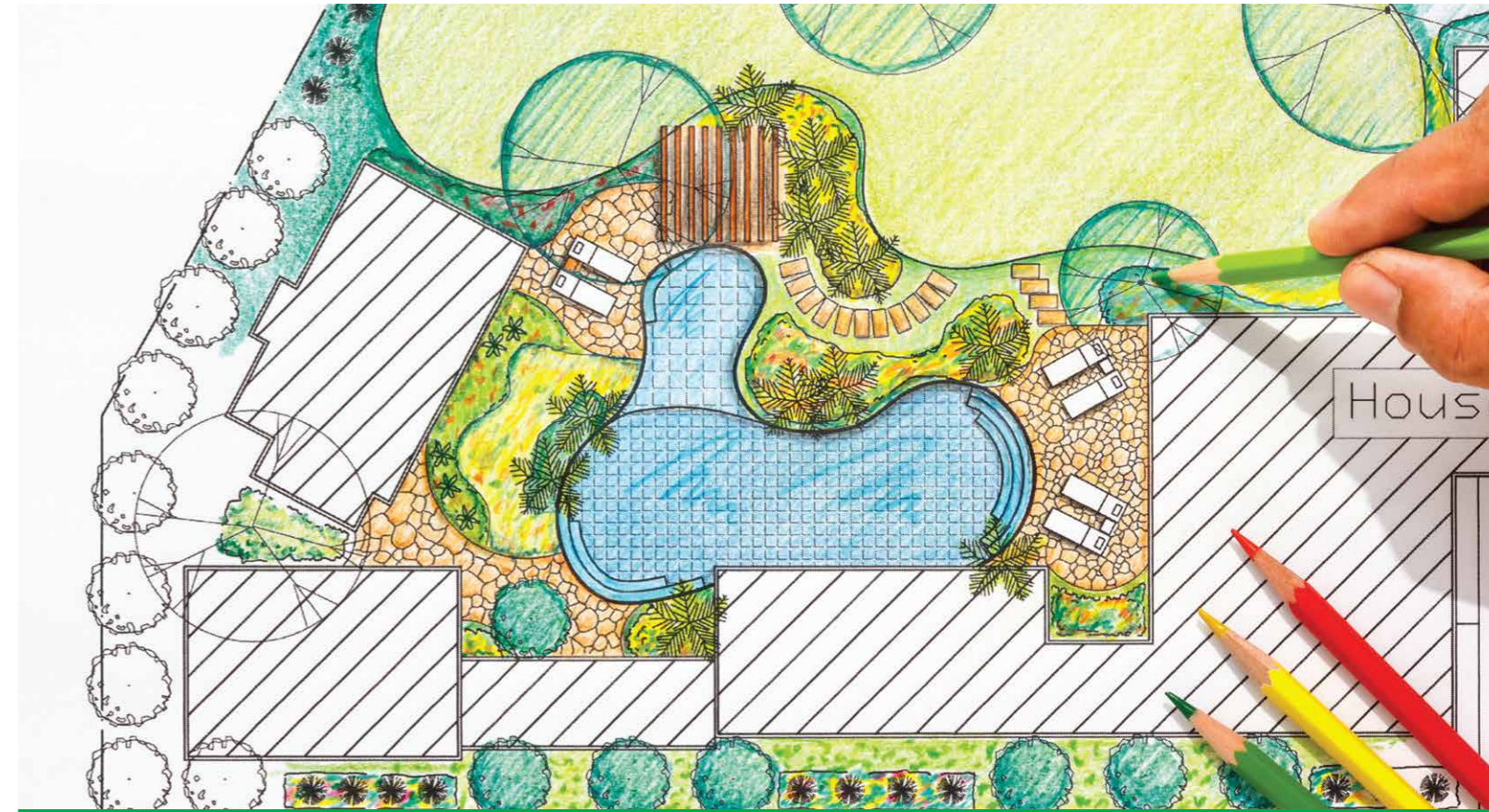


To apply please return the completed application form (attached) together with photocopies of the relevant certificates to Miss Kiki Man at College of Life Sciences and Technology, HKU SPACE, 13/F Fortress Tower, 250 King's Road, North Point, Hong Kong.

General Information for application

- Applicants will be notified of the result of their applications three weeks after the closing date.
- Candidates do not receive notification by late February may assume their application unsuccessful.
- Early application is strongly recommended. Enrolment is normally limited to 28.
- Sufficient postage should be paid to avoid unsuccessful delivery of application.



Certificate in Landscape Design
園景設計證書 GS002A

Enquiries

Tel: 2975 5683
Email: kwk.man@hkuspace.hku.hk
Website: <https://hkuspace.hku.hk/prog/cert-in-landscape-design>



THE UNIVERSITY OF HONG KONG
School of Professional and Continuing Education



資歷架構
Qualifications
Framework

QF Level: 3
QR Registration No: 07/001808/3
QR Registration Validity Period: 05 May 2008 - on-going



HKU SPACE has fully achieved the European Standards for Quality and is recognised as having world-class quality in professional and continuing education. Trust in us as your lifelong learning partner!



Certificate in Landscape Design

Introduction

In recent years there has been a marked increase in demand for quality landscaped outdoor areas. To meet the growing need for a part-time training program in landscape design, HKU SPACE is offering a one-year Certificate Course in Landscape Design. This foundation course is structured for those whose career is related to landscape work or who are seeking responsibilities in landscape management, as well as for those who take a cultural interest in landscape design.

Aims/Objectives

- To introduce students to the history and theory of landscape architecture, the basic principles and practical skills of landscape design.
- To familiarize students with the applications of computer-aided technologies in designing landscape.
- To enable students to develop a sound approach to landscape design, and to acquire some commonly required practical skills.
- To prepare students for further continuing and specialized learning in landscape architecture.

Course Content

1. History and theory of landscape architecture
2. Basic principles and practical skills of landscape design
 - Ecological planning and design
 - Landscape graphics and planning
3. Computer-aided technologies in designing landscape
4. How to develop an approach to landscape design
 - Landscape technology (including site engineering and landscape constructions)
 - Planting practice (including contract principles, documents and administration)
 - Landscape practice (including contractual processes involved in the implementation of landscape projects)

On Completion of The Program, Students Should be able to

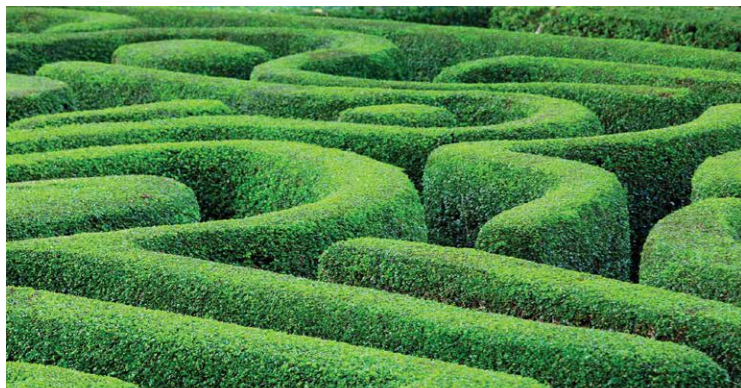
- describe the history and theory of landscape architecture;
- apply the basic principles and practical skills of landscape design in landscape planning;
- apply computer-aided technologies in designing landscape; and
- critically discuss landscape architecture.

Medium of Instruction

English supplemented with Cantonese. Teaching materials will be in English.

Teaching Mode

A variety of methods will be used, including lectures, site visits, computer workshops, case studies and perhaps mini-projects.



Entry Requirements

Applicants shall:

- (a) have completed HKCEE curriculum and have gained in the HKCEE Grade E in a science subject; or
- (b) have completed Senior Secondary curriculum and gained in the HKDSE Examination Level 2 in a science subject; or
- (c) have gained other equivalent qualifications

Applicants should provide evidence of English proficiency, such as HKCEE English Language at level 2 or level 2 in English language in HKDSE Examination.

With effect from 2007, HKU SPACE recognizes Grade E previously awarded for English Language (syllabus B) and Grade C in the case of English Language (syllabus A) at HKCEE as an acceptable alternative to Level 2 in English subject at HKCEE.

Assessment

Students will be assessed by a combination of assignments, tests and project work.

Teaching Schedule

The course is offered on a part-time basis with about 100 contact hours and will commence on 18 February 2023 (tentative). Students will normally attend lectures on Saturday afternoons from 2.00 to 5.00 pm.

Award

Students who have satisfied the assessment requirements are eligible for the award of the Certificate issued by HKU SPACE.

Venue

Admiralty Learning Centre / United Learning Centre / Island East Campus

Teaching Staff

Prof Leslie CHEN, JP FHKLIA(PP), RLA, LARB(PastChair), FHKDCI(VP)

Course Fee

\$28,000 plus expenses incurred in optional field trips / site visits.